

Make the Right move with



Coaching For Competitive Exams

**YOUR FIRST STEP
TOWARDS SUCCESS IN C.A.**

WIN - CPT

**PREPARATORY TEST
SERIES FOR C.P.T.**

(DEC. - 2010)

AGENDA

- ✓ Feature of WIN – CPT
- ✓ Classroom Testing & Assessment Programme
- ✓ Accelerate
- ✓ Subject wise Distributions
- ✓ Overall Performance
- ✓ Topic wise performance
- ✓ Difficulty Level Analysis
- ✓ Negative Marks Analysis
- ✓ Performance Report

FEATURES OF WIN - CPT

- ❖ **12 Mock Tests held at Ideal E-Live Centers.**
- ❖ **Mock Tests will be held from 21st Nov. 10**
- ❖ **Mock Tests will End on 11th Dec. 10**
- ❖ **Results will be announced on Website: -**

www.idealclasses.com

FEATURES OF WIN - CPT

- ❖ All the Test Papers set by IDEAL Professors Team.
- ❖ Mock Tests will be conducted as per CA Institute Pattern.
- ❖ Students can compare their results with that of others & can download their Mark sheets.

Classroom Testing & Assessment Program

What is it?

A Classroom Unit Test Series created by Ideal Classes Private Limited.

Results generated and published on website: - www.idealclasses.com

How it works?

- We create the test series & provide you the papers with OMR Sheets (Optical Mark Recognition)
- Ideal E-Live Centers conducts Test in Class on OMR Sheets
- Answers given are fed by the center through an online system.
- Top-of-the-line Results generated through Ideal Classes Pvt. Ltd. assessment engine for each student (Uploading)
- Password enabled secured login for each student and management to view results.

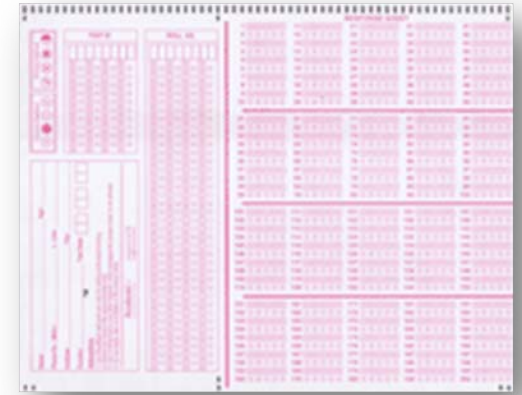
Classroom Testing & Assessment Program



Step 1 – Question Papers for Win – CPT Test series.



Step 2 – Student takes test and submits answer sheets to the Center Head

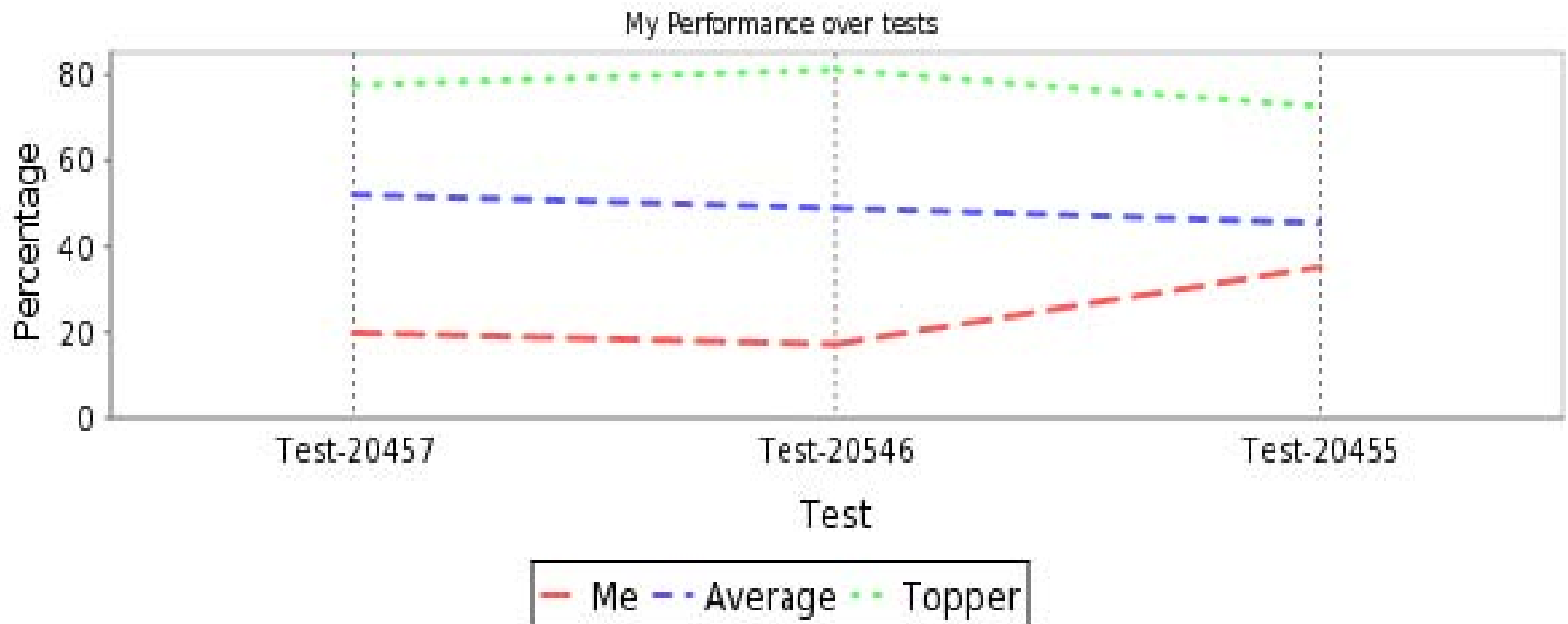
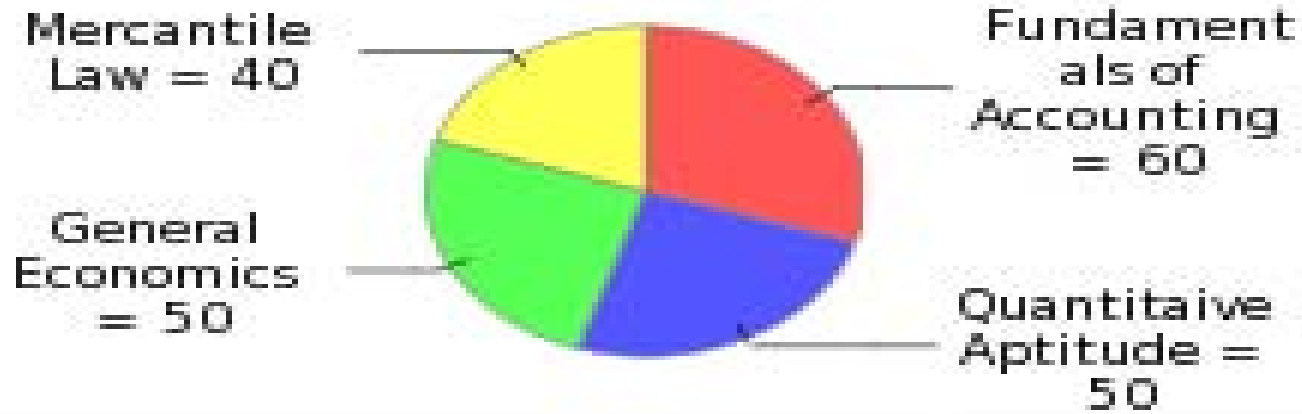


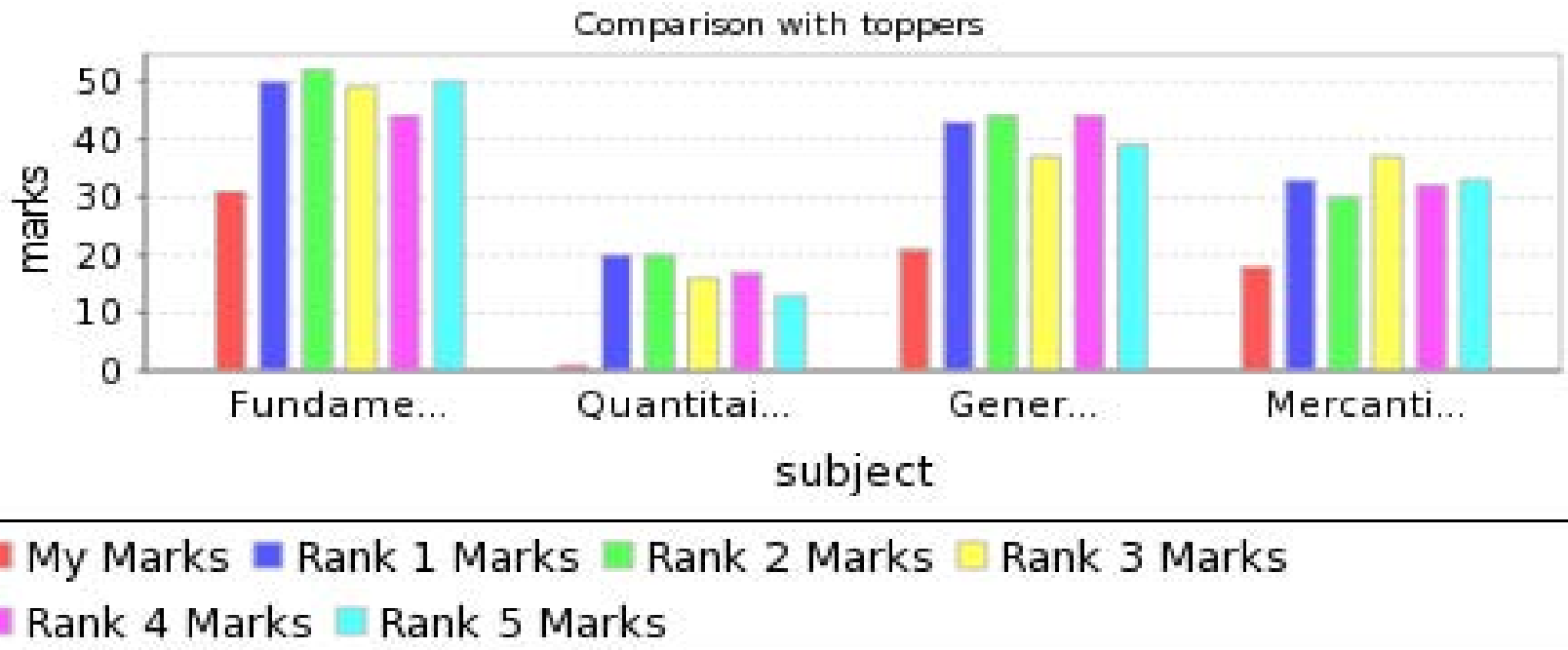
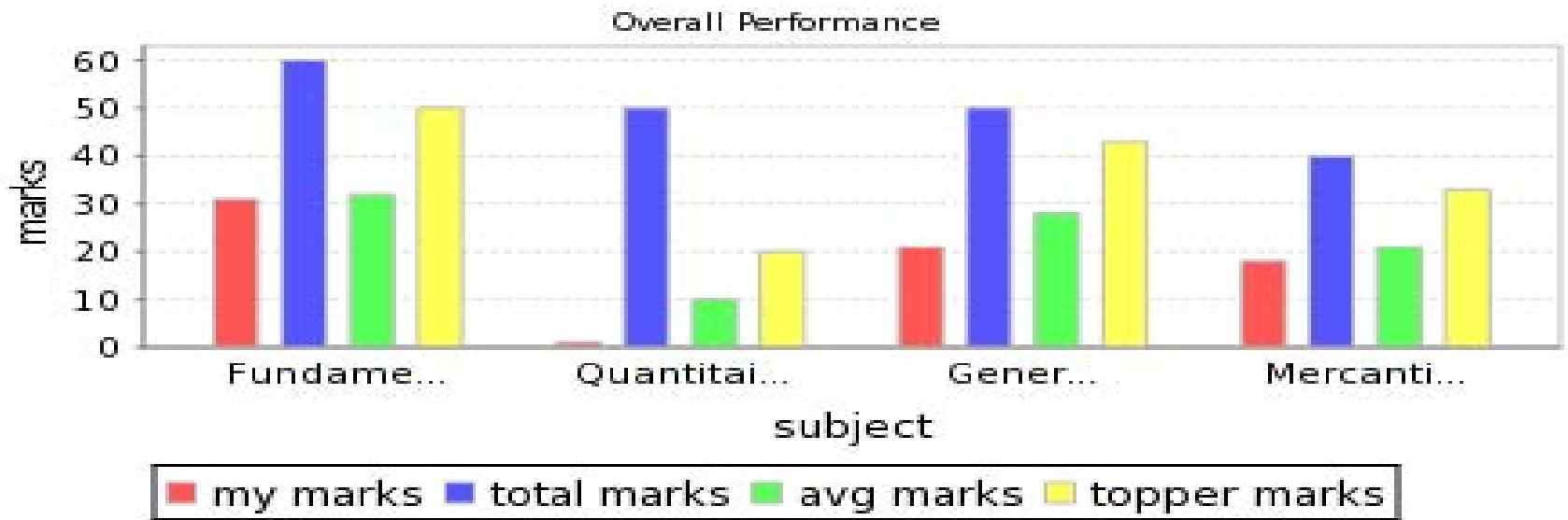
Step 3 – OMRs sent back by E – Live Center to IDEAL HEAD OFFICE



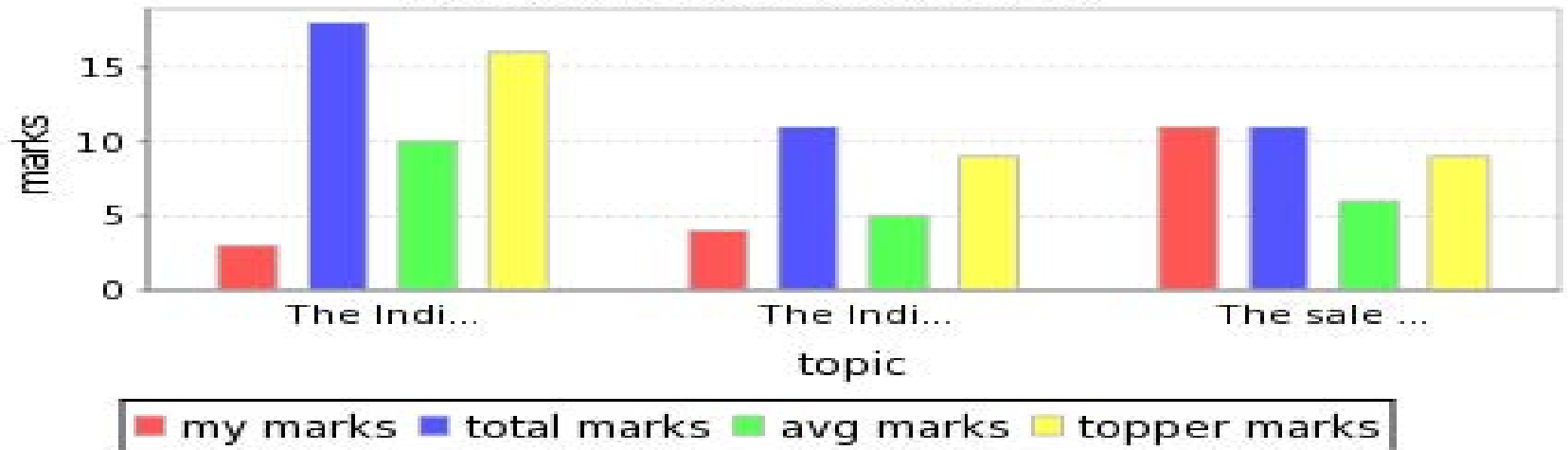
Step 4 – Receive reports online.

Subject wise distribution

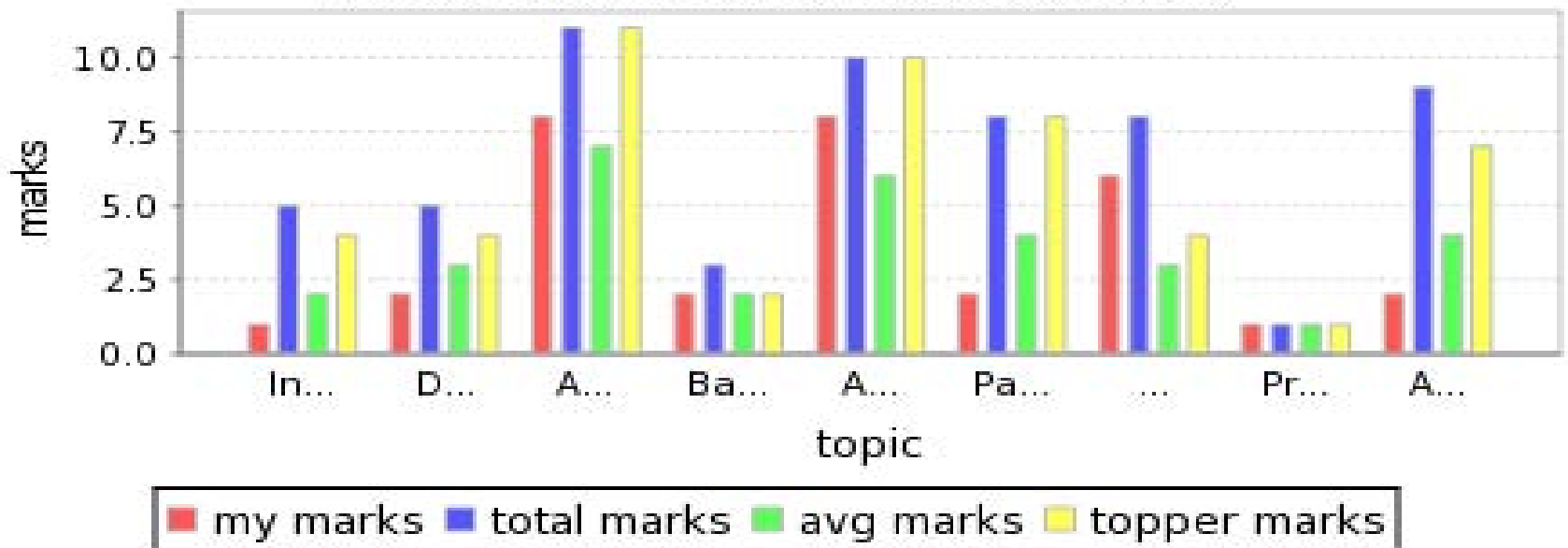




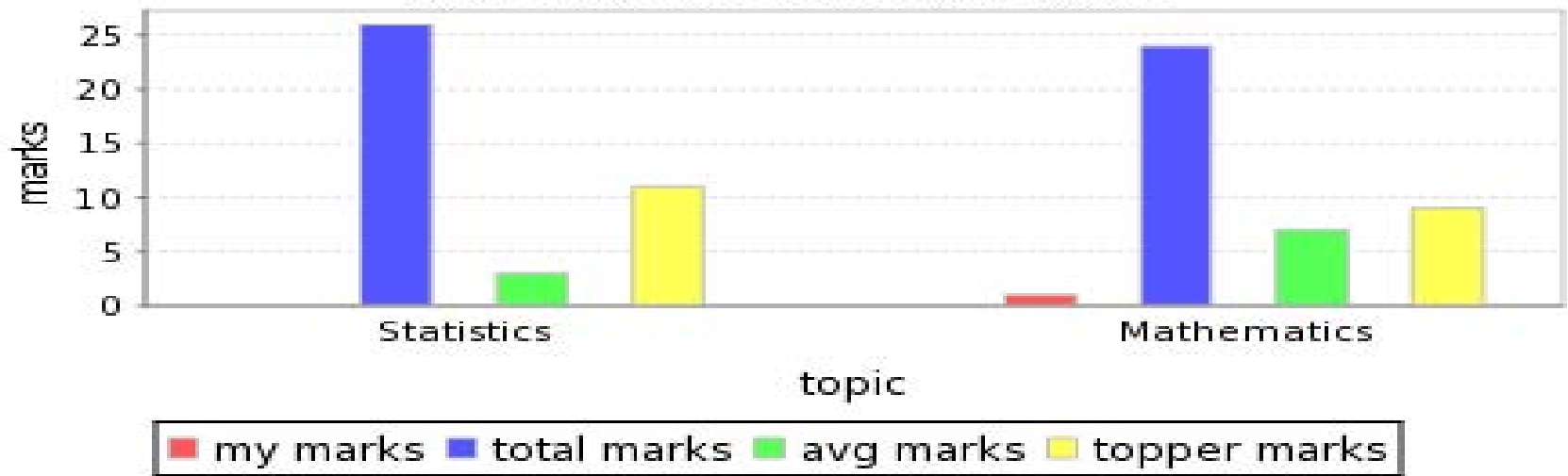
Topicwise Performance for Mercantile Law



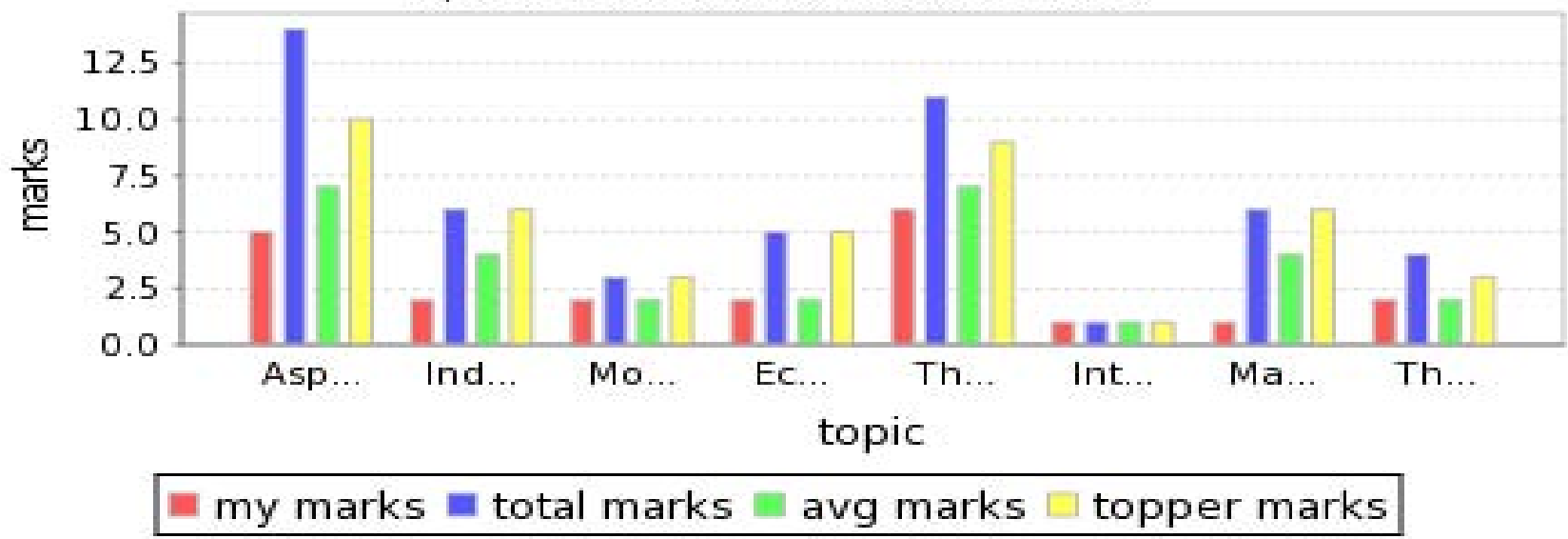
Topicwise Performance for Fundamentals of Accounting



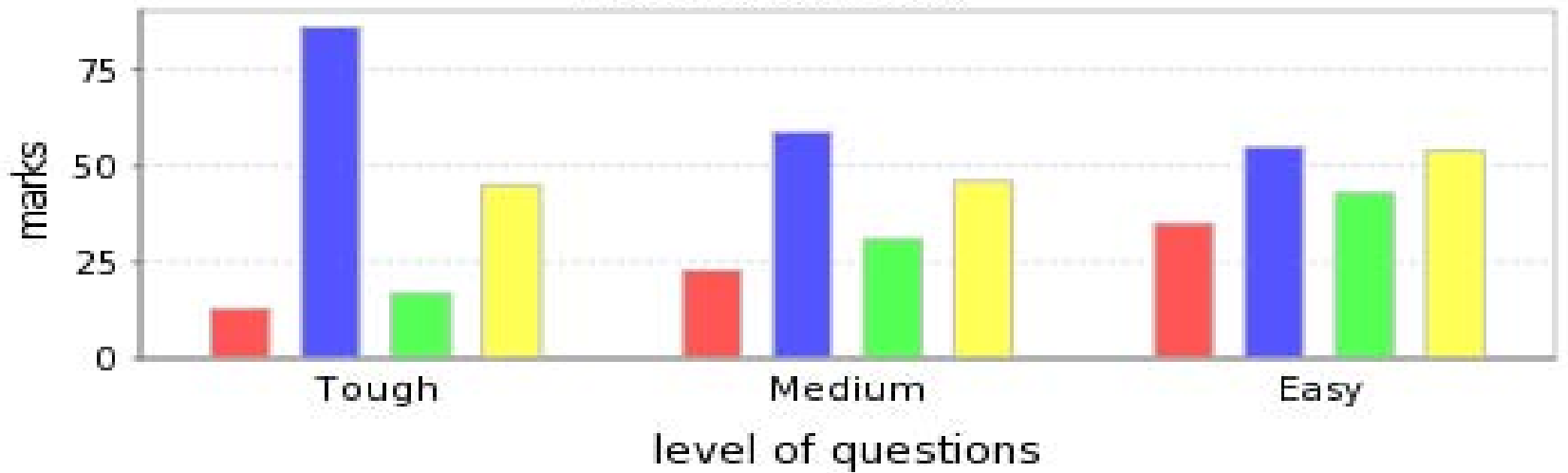
Topicwise Performance for Quantitative Aptitude



Topicwise Performance for General Economics

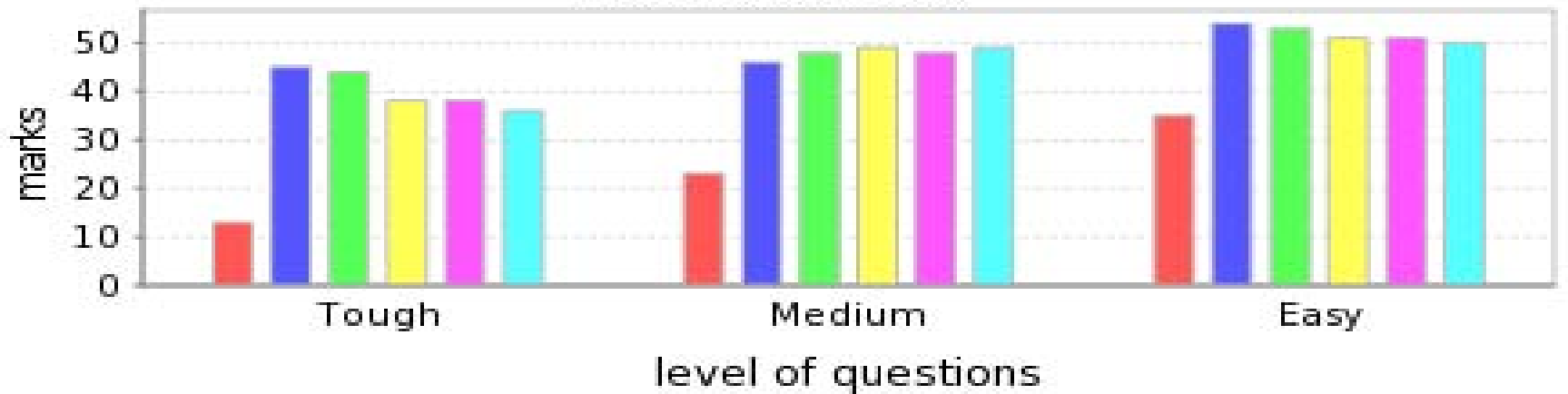


Difficulty Level Analysis



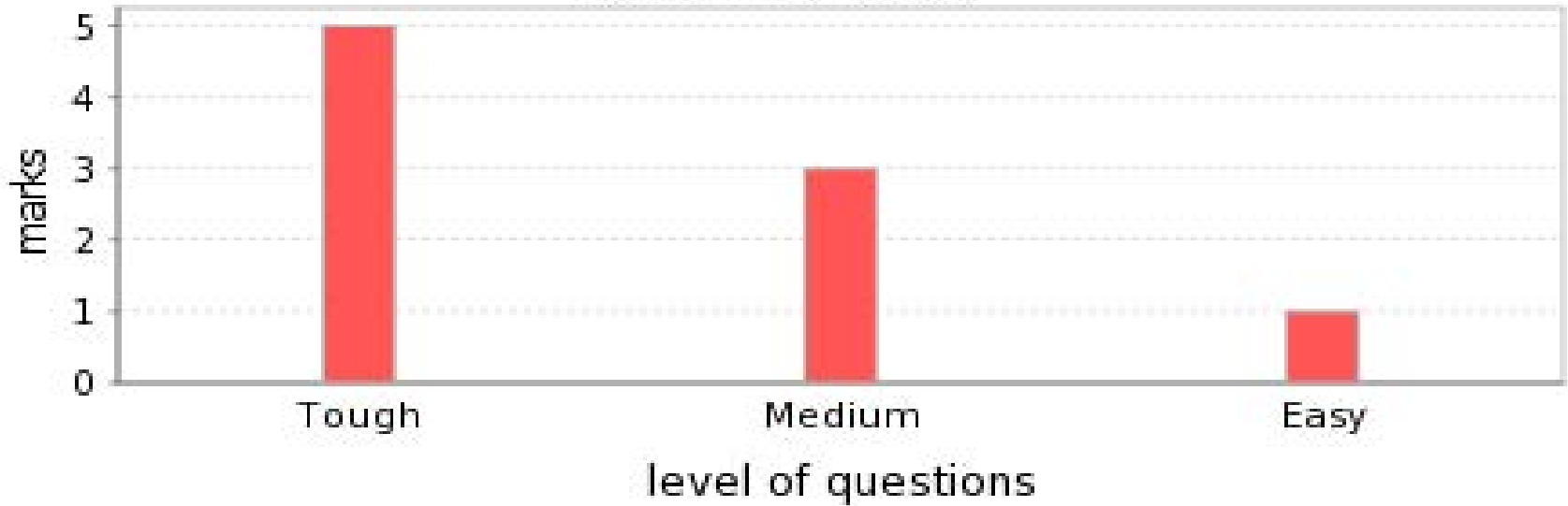
my marks total marks avg marks topper marks

Difficulty Level Analysis



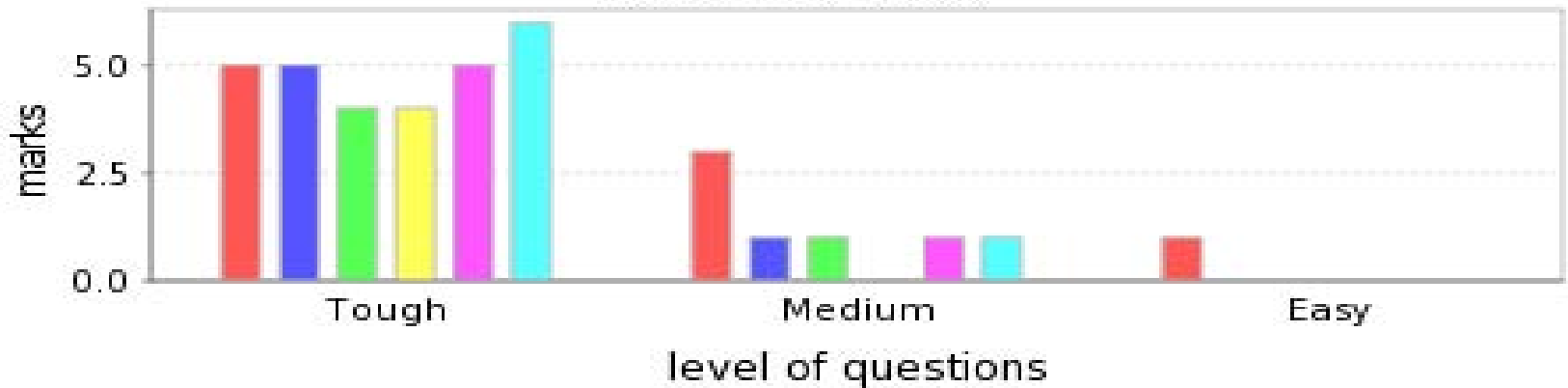
My Marks Rank 1 Marks Rank 2 Marks Rank 3 Marks Rank 4 Marks Rank 5 Marks

Negative Marks Analysis



negative marks

Negative Marks Analysis



negativeMarks Rank 1 Marks Rank 2 Marks Rank 3 Marks Rank 4 Marks Rank 5 Marks

STUDENTS RESULT

Performance Report		as on 23 November, 2010 9:45 AM
Test ID		Student Name
Mock Test 1-20455		Silveniya Munis (id 1694808)
Result for Mock Test 1-20455		Improvement Tips for subject (s)
Total Students	200	By Improving in Quantitative Aptitude by 9 marks your rank will jump by 20 and percentile by 10
My Marks	70.5 / 200	Improvement Tips for Topic (s)
Overall Rank	166	By Improving in Mathematics by 6 marks and Market by 3 marks and your rank will jump by 20 and percentile by 10
Institute Rank	12	Improvement Tips for Negative Mark(s) Scored
Center Rank Overall Percentile	12 18%	Improving your accuracy by not attempting questions you are not sure, you could have avoided -10 marks. And your rank would have jumped by 22 and percentile by 11 Test Question Breakup
Total Questions	200	
Attempted / Not Attempted	59% / 41%	
Correct Ans / Incorrect Ans	80 / 38	
Current Test Topper(s)		
Archit Tendulkar (Marks : 145), Rahul Yadav (Marks : 145), Anish Mehta (Marks : 138), Ruchita Shetty (Marks : 137), Favian Fernandes (Marks : 134)		

REGISTRATION PROCESS

Registration Charges: - Every Student, who wants to appear for these 12 test have to pay Non – Refundable Charges of Rs. 500/- (Five Hundreds only)

Registration : - The registration for these WIN-CPT test can be done at any IDEAL E-live Centers. You can also register online www.idealclasses.com In that case registration charges can be paid at the time of 1st Test at the Center.

**Exam Timing: - 01.30 p.m. to 03.30 p.m.
Paper - 1 (Acct. & Law)
03.45 p.m. to 05.45 p.m.
Paper - 2 (Q.A. & Eco.)**

THANK YOU